

# Annual Meeting of Golfers Presentation



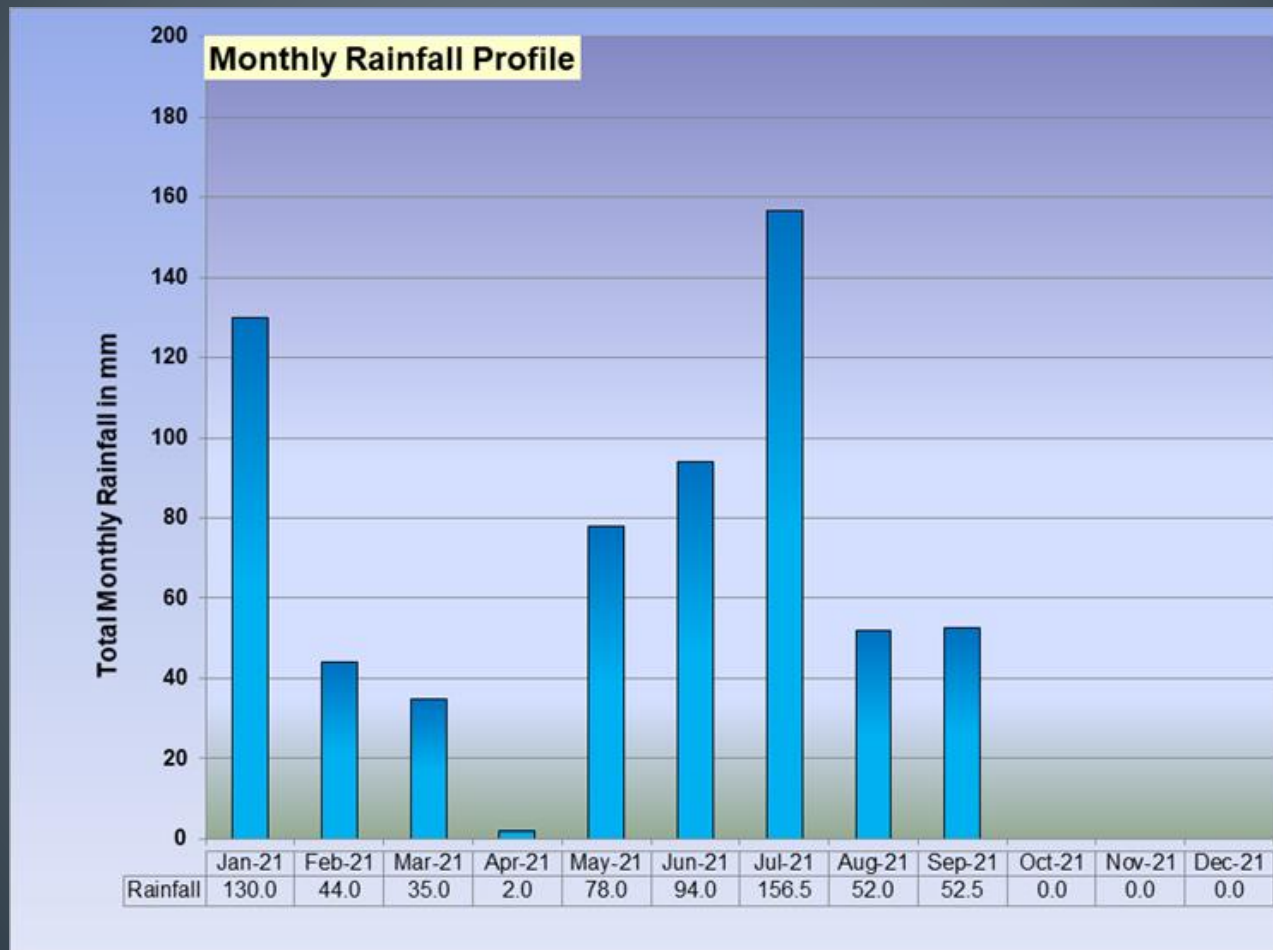
# Strategy for 2021

- 2021 has been a process of getting back on track after lock down.
- Greens aeration, top dressing and soil exchange has been re-initiated
- Overseeding practices - Updating grass composition for tomorrows climate today.
- Tree and woodland management – invested in an independent tree audit process and enhanced tree care programme
- Golf landscaping development – making a more eco friendly course which is more aesthetically pleasing for the golfer.
- Rough and carries – Continue with the programme of intensive management
- Irrigation system -updating the equipment for the future.

# 2021 'A Rather Interesting Year!'

- Year started with no growth due to cold dry conditions in spring
- May, June and July wettest recorded since records begun
- Rest of the summer allowed recovery
- Heavy showers have returned in autumn to reduce scope of the renovation week
- Back on track for winter programme

# Rainfall figures for site





# Greens Presentation



# Greens – management practices

- Greens being push-up soil greens need constant aeration to keep percolation rates high and allow water to drive down to the drainage pipework.
- Top dressing and sand/soil exchange keep surfaces true and firm and help reduce the organic matter build up.
- Will require to continue the drill and fill operation in 2022 to help with winter storm water removal.
- Due to difficulties in supply chain and soaring prices of raw materials, we shall stock pile fertilizer and key products in the coming year so we are able to manage greens nutrient balance.



# Renovation Processes



# Renovations

- During the pandemic years we had to do less physical work on the course to satisfy social distancing regulations and rotation of teams.
- In 2022 we will increase general maintenance and run full operations: verti-draining, overseeding and all processes in accordance with the recommendations of our agronomist.



# Accolades



**Excellence in Environmental Stewardship & Wildlife Conservation**

## *Highly Commended*

The Sports Turf Research Institute recognizes and applauds the Roehampton Club for their endeavours of improving the environmental status of the golf course and estate management though the work of the Course & Grounds Department

**Golf Environment Awards 2021**

# Environmental Practices.

- In 2021 we were highly commended by the Sport Turf Research Institute for our work of stewardship of the estate.
- We will continue to build on our success and hope to gain GEO (Golf Environmental Organisation) status as an accredited club in the coming year.
- We are now an zero waste department, in that all green material is recycled and turned into compost.
- The material is the bedrock of our landscaping programme.
- Other clubs are now taking interest in the Roehampton Club example and using our approach on their own properties.

# Stewardship of the Environment





# Landscape Project



# Benefits of Sustainable planting

- The course is a compact site and planting between holes adds a sense of seclusion and individuality to the holes.
- Planting areas will help capture ground water and help soak up the excess during flood conditions.
- We are now a net zero waste section of the Club which was a target our environmental policy.
- Planting helps increase our diversity of vegetation which in turn increases our insect life which is the basis of the food chain for other wildlife.
- Our approach is sequestering  $\text{CO}_2$  and the course is acting as a sink for the local area in scrubbing pollution from the air.



# Going Forward





# 2022 and Beyond

- In an ever changing world, we will have to more inventive to over come the issues that Climate Change is hurling our way.
- The pendulum of increasing hotter periods in summer or increase rainfall deluges is one a golf course rebuilt in the 1950's was not designed for or with a comprehension of what was to come.
- We shall continue to overseed to import new heat tolerant grass varieties into the surfaces.
- Drainage is an issue we will need to review and improve to create additional capacity to displace flood/storm water.
- Our renovation process will be key to moving rainwater away from key surfaces for the future.

# Review Drainage Scheme for the Course



# 2022 – A Pivotal Year





# Continued partnership with Toro



**TORO®**

# Investment in the Course

- A full competitive bid process was conducted this year to sources the best machinery manufacturer to suit all elements of the Clubs estate.
- After consulting with the key players in the market and evaluating their bids, The Toro Company was found to be the best fit for the Club.
- The tender was also the least cost to the Club and offers a continued relationship with the internationally recognized brand.
- Roll over the contracts will commence in early spring of 2022

# Surfaces Improvement is our Priority





# Tree Management

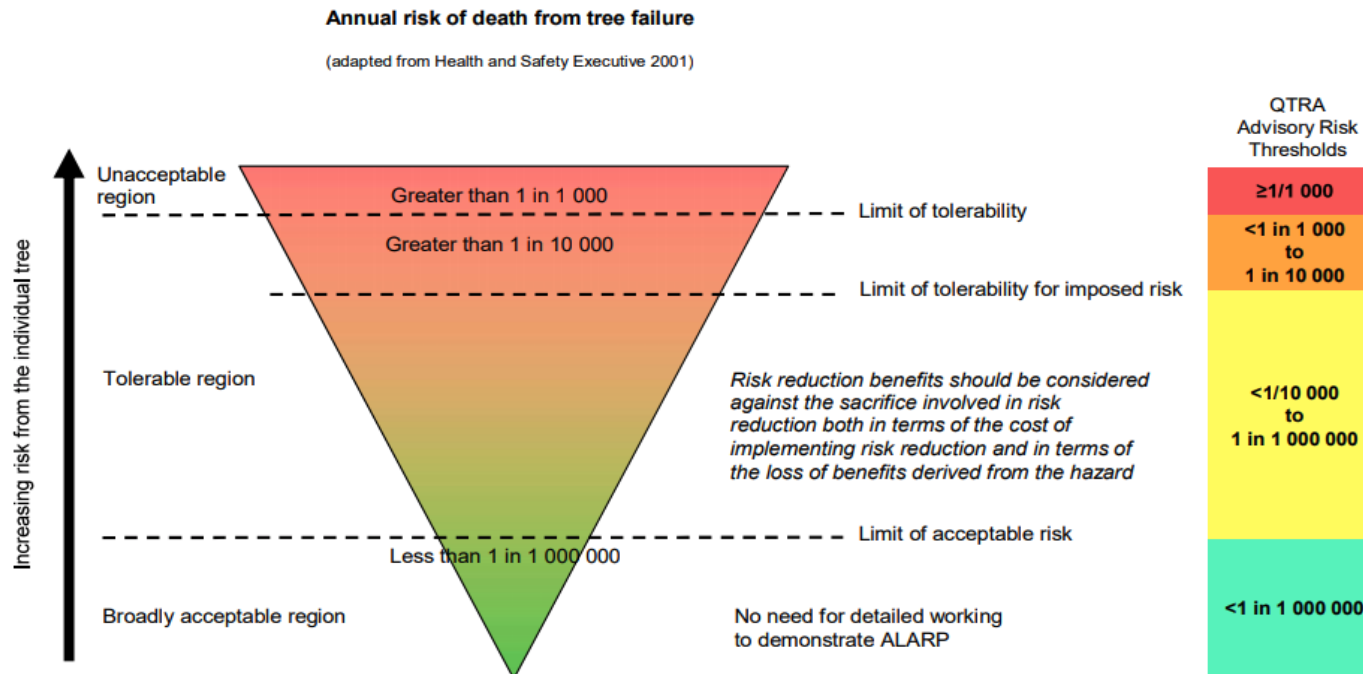


# Tree and Plantation Management

- A full audit of the tree stock was undertaken this year by a qualified arborist who utilized a risk based system to assess the tree stock.
- Over 2,500 individual trees and all woodland plantations on the estate are now itemized on a tree register and will be assessed regularly as part of the process of tree management.
- The process is a tree concentric basis and is sympathetic to retaining and widening the diversity of tree stock on the estate.
- The rationale is that as British natives are affected by pest and disease in the future. Other varieties will be present to fill in the gaps as climate change affects UK flora in the next century.

# Risk Assessment Process for Trees

## Tolerability of Risk Framework



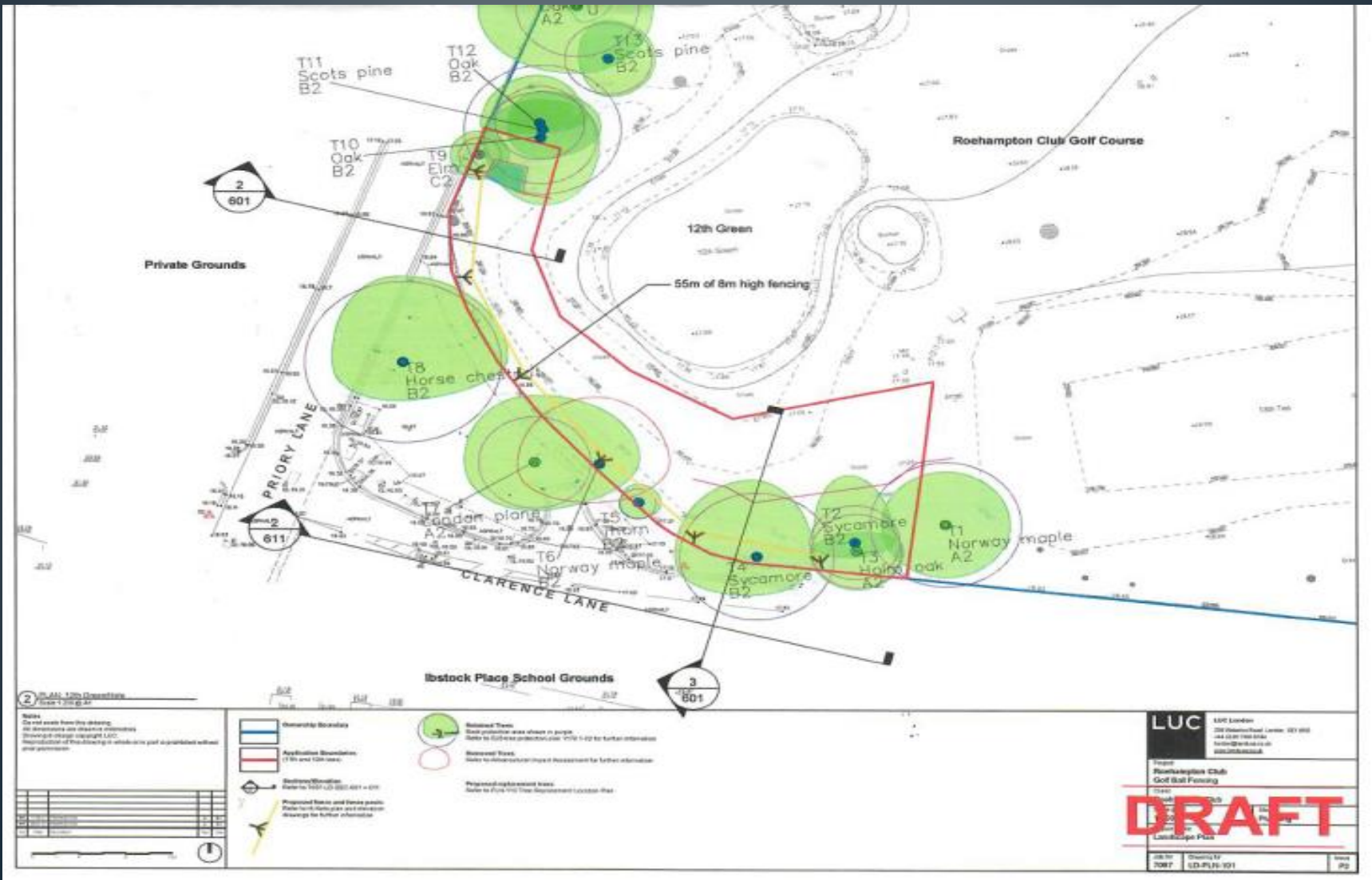


# 12<sup>th</sup> Hole Development





# Hole No 12 – Safety Fencing & Landscaping



# 12<sup>th</sup> & 13<sup>th</sup> Hole Development

- With additional fencing being placed at the back of the 12<sup>th</sup> green. It will be important to landscape the area to reduce the impact of this safety curtain.
- By landscaping to the left and right of the green and enhancing the 13<sup>th</sup> tee complex, members playing the hole will not focus on the fencing framework but on the green and the aesthetic quality of the playing area.
- The red oaks trees to the left of the 13<sup>th</sup> hole are in decline and will need to be replaced in the future. A more suitable tree has been selected that can cope with the soil conditions in this area.

# Continue with our Agronomist for Course Improvements – Incremental gains is our goal!





# Restructuring of the team





# Looking Forward with a Rebuilt Team

- With the departure of Head Greenkeeper Ashley Allpress, it was important to find the best replacement for the Club this autumn.
- After a exhaustive recruitment process, we narrowed the selection process to several candidates of a high calibre. Finally the process resulted in the offer being made to our very own deputy, David Howe, who proved himself to be a worthy successor to Ashley.
- Joining David as deputy will be Jamie Wright, who has a very impressive biography of experience and qualifications. Jamie will be the perfect foil to assist David with the daily course management.

# Build a Team by Investing in the Team



INVESTORS  
IN PEOPLE | Gold

